

# Berkshire County WDA

## UI Claimant Characteristics Report

Week Ending 12-10-2022 (Preliminary)

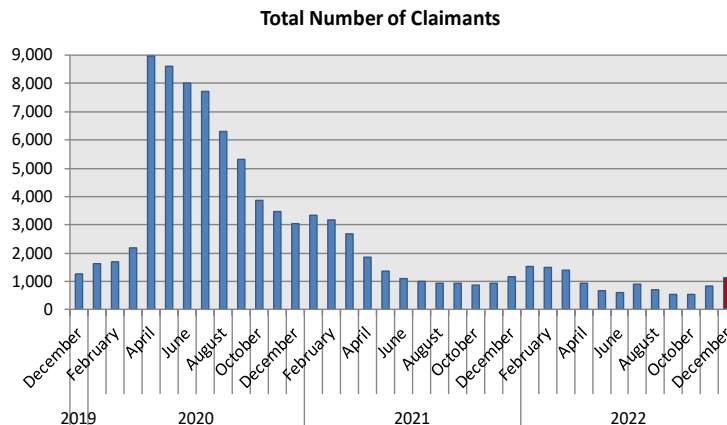


This report provides summary information on selected characteristics of Berkshire County WDA residents claiming unemployment insurance (UI) benefits during a reference week. Characteristics include age; educational attainment; and industry, occupation and average weekly wages prior to their UI claim. The data and information for Massachusetts statewide and by Local Workforce Development Area for those claiming the week ending 12-10-2022 can be found at: <https://lmi.dua.eol.mass.gov/LMI/ClaimantProfiles>. Source: MA DUA compiled by MA DER

### Claimants by Occupations

SOC #	Claimant Count by SOC Occupation Name	December-22	November-22	OTM Change	December-21	OTY Change		
11	Management	104	85	↑	19	93	↑	11
13	Business & Financial Operations	25	26	↓	(1)	23	↑	2
15	Computer & Mathematical	4	5	↓	(1)	6	↓	(2)
17	Architecture & Engineering	13	11	↑	2	9	↑	4
21	Community & Social Service	17	16	↑	1	15	↑	2
25	Education, Training, & Library	13	13	→	-	22	↓	(9)
27	Arts, Design, Entertainment, Sports, & Media	19	15	↑	4	12	↑	7
29	Healthcare Practitioners & Technical	21	22	↓	(1)	29	↓	(8)
31	Healthcare Support	52	58	↓	(6)	47	↑	5
33	Protective Service	9	8	↑	1	18	↓	(9)
35	Food Preparation & Serving Related	87	73	↑	14	77	↑	10
37	Building and Grounds Cleaning & Maintenance	184	68	↑	116	189	↓	(5)
39	Personal Care & Service	17	13	↑	4	48	↓	(31)
41	Sales & Related	56	50	↑	6	74	↓	(18)
43	Office & Administrative Support	77	77	→	-	112	↓	(35)
47	Construction & Extraction	217	133	↑	84	207	↑	10
49	Installation, Maintenance, & Repair	38	27	↑	11	41	↓	(3)
51	Production	48	51	↓	(3)	41	↑	7
53	Transportation & Material Moving	98	62	↑	36	64	↑	34
	Information Not Available	4	3	↑	1	5	↓	(1)
	<b>All Occupations</b>	<b>1,136</b>	<b>841</b>	<b>↑</b>	<b>295</b>	<b>1,156</b>	<b>↓</b>	<b>(20)</b>

Note: OTM = Over-The-Month, OTY = Over-The-Year



## Claimants by Industry

NAICS #	Claimant Count by NAICS Industry Name	December-22	November-22	OTM Change	December-21	OTY Change
11	Agriculture, Forestry, Fishing & Hunting	17	8	↑	9	6
23	Construction	179	76	↑	103	208
31-33	Manufacturing	91	103	↓	(12)	57
42	Wholesale Trade	29	23	↑	6	27
44-45	Retail Trade	119	94	↑	25	129
48-49	Transportation & Warehousing	16	8	↑	8	20
51	Information	10	8	↑	2	13
52	Finance & Insurance	8	9	↓	(1)	19
53	Real Estate, Rental, & Leasing	21	12	↑	9	17
54	Professional, Scientific, and Technical Services	50	42	↑	8	50
56	Admin. & Support, Waste Manag., and Remed. Serv.	135	80	↑	55	130
61	Educational Services	15	16	↓	(1)	20
62	Health Care & Social Assistance	93	84	↑	9	117
71	Arts, Entertainment, & Recreation	82	46	↑	36	70
72	Accommodation & Food Services	97	88	↑	9	110
81	Other Services (except Public Administration)	57	39	↑	18	60
92	Public Administration	26	22	↑	4	27
	Information Not Available	82	76	↑	6	66
<b>All Industries</b>		<b>1,136</b>	<b>841</b>	<b>↑</b>	<b>295</b>	<b>1,156</b>
						<b>(20)</b>

Note: OTM = Over-The-Month, OTY = Over-The-Year

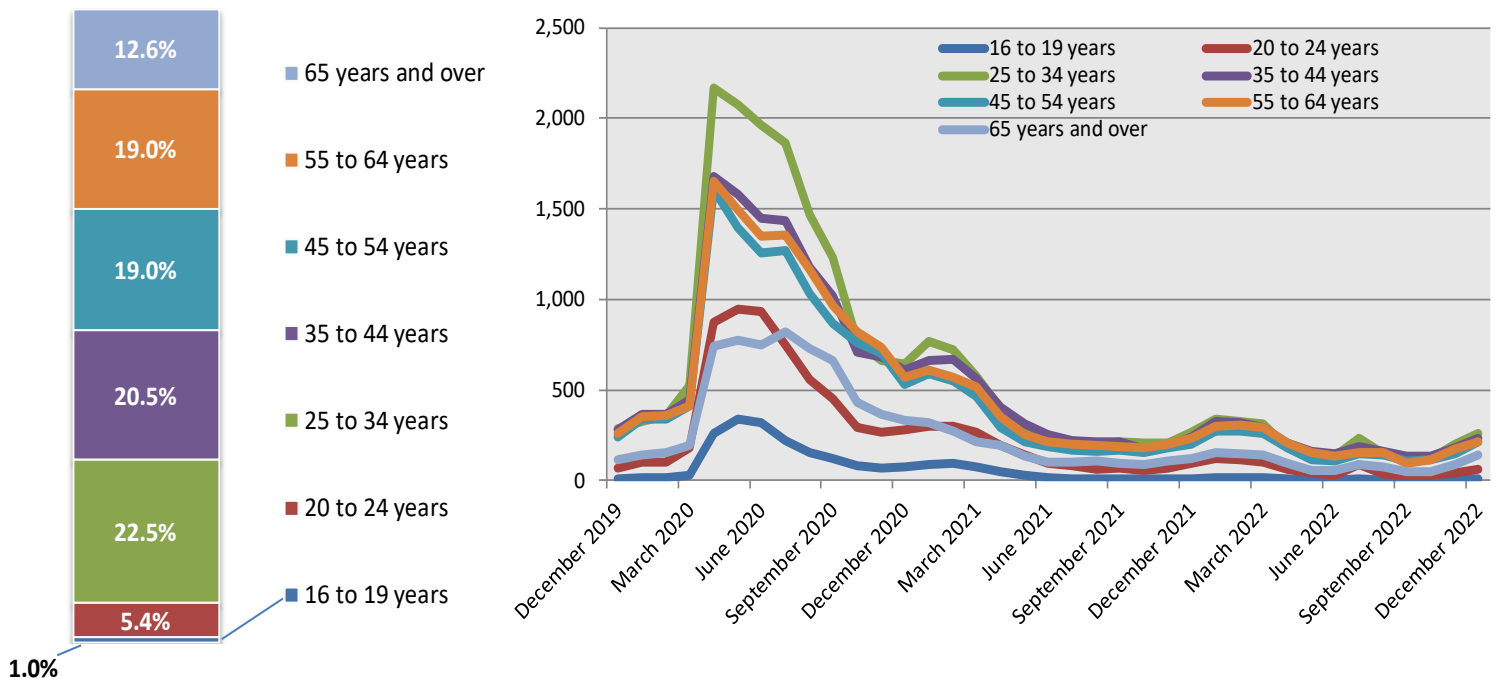
## Average Weekly Wages prior to UI Claim by Industry

NAICS #	Industry	December-22	November-22	December-21
11	Agriculture, Forestry, Fishing & Hunting	\$659.11	\$691.85	\$820.08
23	Construction	\$820.74	\$852.57	\$836.25
31-33	Manufacturing	\$890.26	\$846.19	\$746.70
42	Wholesale Trade	\$707.94	\$718.71	\$627.69
44-45	Retail Trade	\$704.67	\$645.08	\$641.59
48-49	Transportation & Warehousing	\$808.42	\$812.74	\$512.26
51	Information	\$1,224.66	\$675.40	\$2,585.73
52	Finance & Insurance	\$1,337.96	\$1,255.82	\$981.09
53	Real Estate, Rental, & Leasing	\$800.26	\$943.96	\$606.65
54	Professional, Scientific, and Technical Services	\$1,236.90	\$1,451.25	\$873.85
56	Admin. & Support, Waste Manag., and Remed. Serv.	\$629.54	\$742.63	\$523.01
61	Educational Services	\$774.73	\$879.02	\$1,307.66
62	Health Care & Social Assistance	\$841.60	\$961.26	\$848.10
71	Arts, Entertainment, & Recreation	\$476.62	\$513.12	\$480.61
72	Accommodation & Food Services	\$542.59	\$501.91	\$458.79
81	Other Services (except Public Administration)	\$709.10	\$678.08	\$507.41
92	Public Administration	\$784.52	\$896.27	\$821.08
	Information Not Available	\$745.16	\$776.45	\$561.06
<b>All Industries</b>		<b>\$753.96</b>	<b>\$788.20</b>	<b>\$701.14</b>

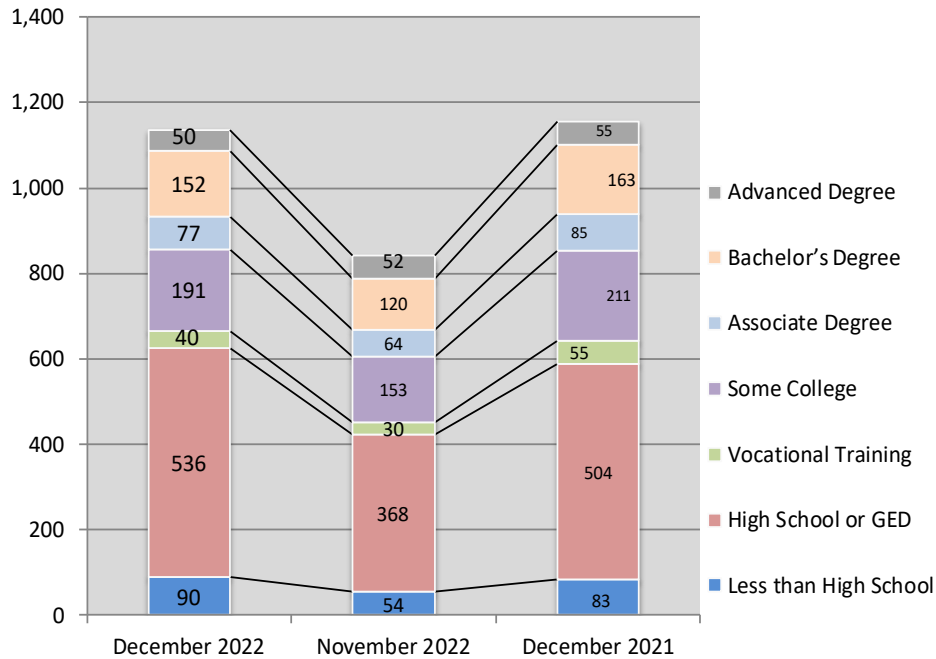
## Average Weekly Wages prior to UI Claim by Occupation

SOC #	Occupation	December-22	November-22	December-21
11	Management	\$1,430.07	\$1,508.47	\$1,003.10
13	Business & Financial Operations	\$1,019.90	\$1,014.65	\$1,102.40
15	Computer & Mathematical	\$1,697.56	\$1,963.91	\$1,759.90
17	Architecture & Engineering	\$1,067.95	\$1,080.83	\$1,453.93
21	Community & Social Service	\$764.13	\$728.55	\$890.93
25	Education, Training, & Library	\$767.55	\$913.57	\$931.38
27	Arts, Design, Entertainment, Sports, & Media	\$1,087.92	\$899.42	\$862.11
29	Healthcare Practitioners & Technical	\$1,062.62	\$1,096.67	\$1,442.33
31	Healthcare Support	\$649.91	\$574.35	\$509.50
33	Protective Service	\$681.10	\$541.00	\$579.66
35	Food Preparation & Serving Related	\$505.94	\$506.27	\$461.95
37	Building and Grounds Cleaning & Maintenance	\$469.96	\$457.42	\$427.18
39	Personal Care & Service	\$596.09	\$646.88	\$443.51
41	Sales & Related	\$699.58	\$702.42	\$815.87
43	Office & Administrative Support	\$613.41	\$654.19	\$683.72
47	Construction & Extraction	\$831.05	\$859.08	\$829.05
49	Installation, Maintenance, & Repair	\$648.20	\$620.35	\$566.29
51	Production	\$873.44	\$887.67	\$739.56
53	Transportation & Material Moving	\$654.71	\$601.27	\$509.59
	Information Not Available	\$402.42	\$400.30	\$602.03
<b>All Occupations</b>		<b>\$753.96</b>	<b>\$788.20</b>	<b>\$701.14</b>

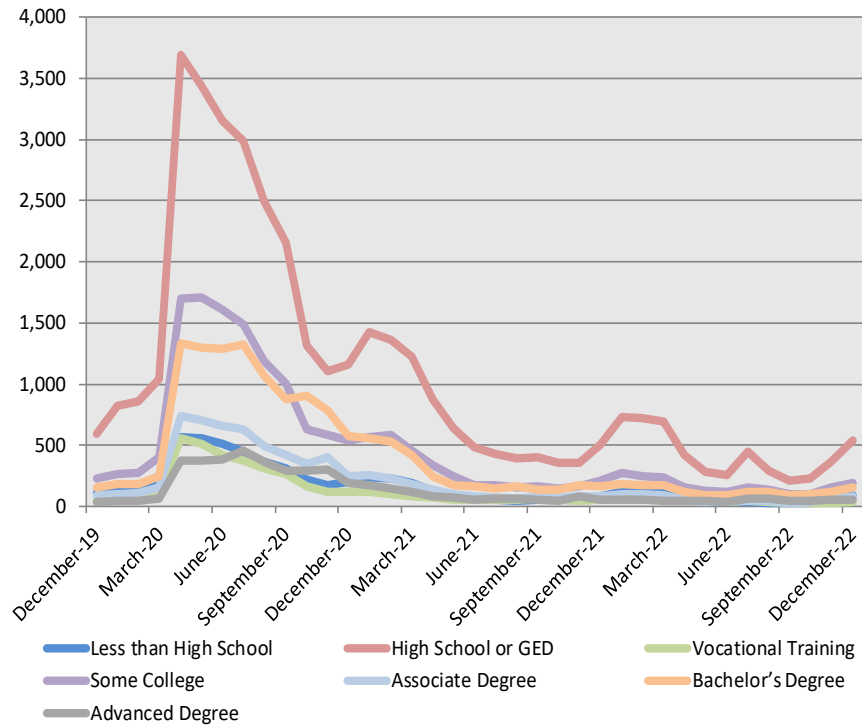
## Age Breakdown



## Claimants by Educational Attainment



**Trends over time**



## Important Contact Information

For regional information, please contact your local Workforce Board: For further information, please go to

Berkshire County Regional Employment Board, Inc.

66 Allen Street

Pittsfield, MA 01201

<http://www.berkshirereb.org/>

(413) 442-7177

<https://lmi.dua.eol.mass.gov/LMI/>



This workforce product was funded by a grant awarded by the U.S. Department of Labor's Employment and Training Administration. [\(more...\)](#)

