

Berkshire County WDA

UI Claimant Characteristics Report

Week Ending 03-18-2023 (Preliminary)

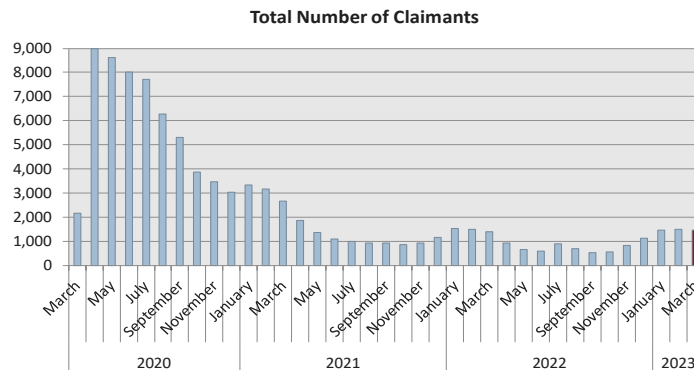


This report provides summary information on selected characteristics of Berkshire County WDA residents claiming unemployment insurance (UI) benefits during a reference week. Characteristics include age; educational attainment; and industry, occupation and average weekly wages prior to their UI claim. The data and information for Massachusetts statewide and by Local Workforce Development Area for those claiming the week ending 03-18-2023 can be found at: <https://lmi.dua.eol.mass.gov/LMI/ClaimantProfiles>. Source: MA DUA compiled by MA DER

Claimants by Occupations

SOC #	Claimant Count by SOC Occupation Name	March-23	February-23	OTM Change	March-22	OTY Change
11	Management	132	129	↑ 3	115	↑ 17
13	Business & Financial Operations	22	19	↑ 3	17	↑ 5
15	Computer & Mathematical	7	8	↓ (1)	3	↑ 4
17	Architecture & Engineering	11	10	↑ 1	10	↑ 1
21	Community & Social Service	13	17	↓ (4)	11	↑ 2
25	Education, Training, & Library	13	13	→ -	18	↓ (5)
27	Arts, Design, Entertainment, Sports, & Media	23	23	→ -	15	↑ 8
29	Healthcare Practitioners & Technical	21	21	→ -	29	↓ (8)
31	Healthcare Support	58	57	↑ 1	50	↑ 8
33	Protective Service	11	13	↓ (2)	15	↓ (4)
35	Food Preparation & Serving Related	78	83	↓ (5)	99	↓ (21)
37	Building and Grounds Cleaning & Maintenance	257	274	↓ (17)	215	↑ 42
39	Personal Care & Service	17	22	↓ (5)	36	↓ (19)
41	Sales & Related	73	59	↑ 14	58	↑ 15
43	Office & Administrative Support	110	110	→ -	99	↑ 11
47	Construction & Extraction	359	381	↓ (22)	380	↓ (21)
49	Installation, Maintenance, & Repair	42	43	↓ (1)	45	↓ (3)
51	Production	49	40	↑ 9	46	↑ 3
53	Transportation & Material Moving	138	140	↓ (2)	106	↑ 32
	Information Not Available	5	7	↓ (2)	7	↓ (2)
	All Occupations	1,483	1,516	↓ (33)	1,411	↑ 72

Note: OTM = Over-The-Month, OTY = Over-The-Year



Claimants by Industry

NAICS #	Claimant Count by NAICS Industry Name	March-23	February-23	OTM Change	March-22	OTY Change
11	Agriculture, Forestry, Fishing & Hunting	35	26	↑	14	↑
23	Construction	367	387	↓	388	↓
31-33	Manufacturing	61	55	↑	42	↑
42	Wholesale Trade	40	40	→	36	↑
44-45	Retail Trade	149	158	↓	147	↑
48-49	Transportation & Warehousing	28	29	↓	24	↑
51	Information	13	10	↑	9	↑
52	Finance & Insurance	24	19	↑	11	↑
53	Real Estate, Rental, & Leasing	24	23	↑	16	↑
54	Professional, Scientific, and Technical Services	60	61	↓	56	↑
56	Admin. & Support, Waste Manag., and Remed. Serv.	194	203	↓	159	↑
61	Educational Services	14	17	↓	19	↓
62	Health Care & Social Assistance	84	86	↓	93	↓
71	Arts, Entertainment, & Recreation	79	83	↓	74	↑
72	Accommodation & Food Services	119	115	↑	129	↓
81	Other Services (except Public Administration)	72	72	→	72	→
92	Public Administration	24	24	→	28	↓
	Information Not Available	77	87	↓	76	↑
All Industries		1,483	1,516	↓	1,411	↑

Note: OTM = Over-The-Month, OTY = Over-The-Year

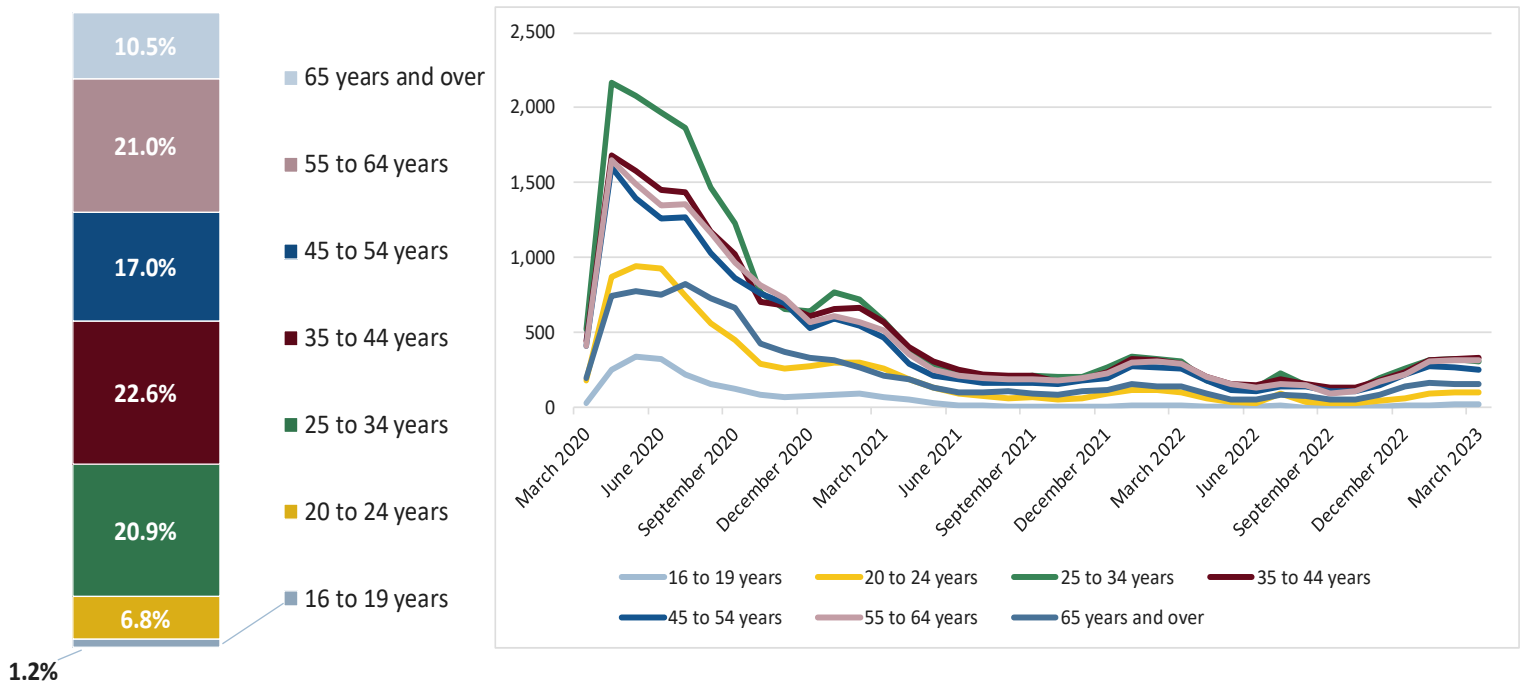
Average Weekly Wages prior to UI Claim by Industry

NAICS #	Industry	March-23	February-23	March-22
11	Agriculture, Forestry, Fishing & Hunting	\$677.73	\$692.72	\$532.07
23	Construction	\$854.60	\$847.88	\$855.18
31-33	Manufacturing	\$1,015.01	\$980.04	\$790.79
42	Wholesale Trade	\$940.88	\$957.02	\$551.00
44-45	Retail Trade	\$677.58	\$684.38	\$607.65
48-49	Transportation & Warehousing	\$857.10	\$829.69	\$641.52
51	Information	\$1,408.92	\$1,303.58	\$1,588.14
52	Finance & Insurance	\$1,397.23	\$1,543.01	\$753.37
53	Real Estate, Rental, & Leasing	\$831.68	\$846.00	\$682.65
54	Professional, Scientific, and Technical Services	\$1,070.02	\$1,076.71	\$846.68
56	Admin. & Support, Waste Manag., and Remed. Serv.	\$649.73	\$638.70	\$616.16
61	Educational Services	\$689.37	\$887.31	\$1,038.82
62	Health Care & Social Assistance	\$1,037.00	\$1,097.42	\$825.80
71	Arts, Entertainment, & Recreation	\$529.97	\$526.27	\$518.40
72	Accommodation & Food Services	\$645.55	\$607.82	\$508.88
81	Other Services (except Public Administration)	\$676.82	\$693.86	\$575.31
92	Public Administration	\$794.07	\$822.62	\$533.02
	Information Not Available	\$825.22	\$802.85	\$696.94
All Industries		\$801.64	\$798.29	\$709.06

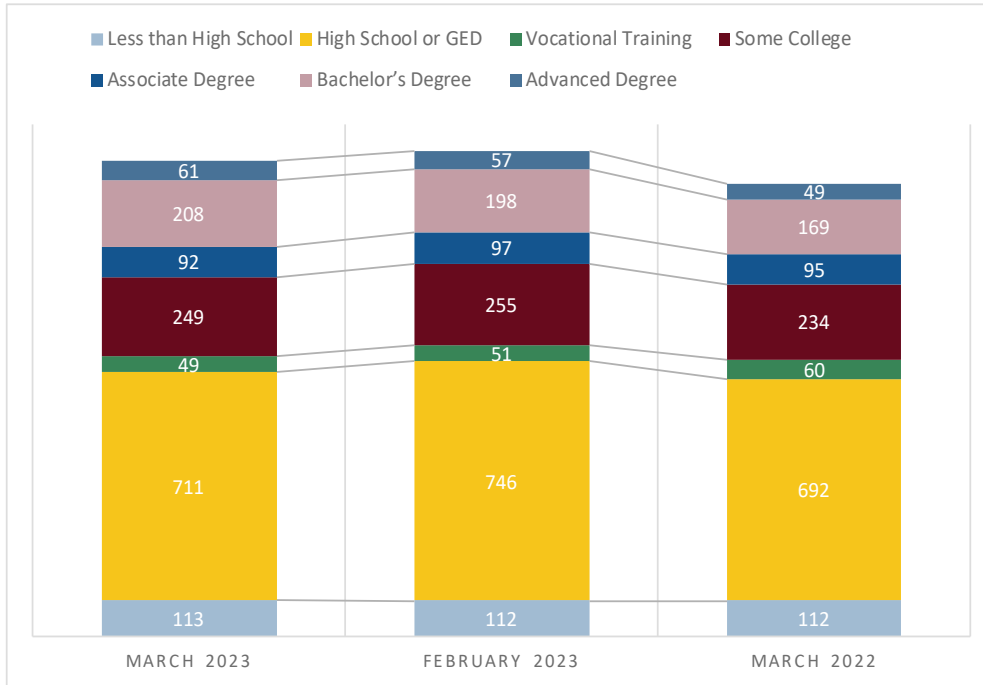
Average Weekly Wages prior to UI Claim by Occupation

SOC #	Occupation	March-23	February-23	March-22
11	Management	\$1,507.65	\$1,515.08	\$1,150.13
13	Business & Financial Operations	\$1,021.22	\$1,086.07	\$1,127.66
15	Computer & Mathematical	\$1,550.71	\$1,556.08	\$1,512.42
17	Architecture & Engineering	\$1,656.67	\$1,361.05	\$1,328.77
21	Community & Social Service	\$730.46	\$753.99	\$651.62
25	Education, Training, & Library	\$563.82	\$746.71	\$637.64
27	Arts, Design, Entertainment, Sports, & Media	\$1,048.35	\$1,000.46	\$798.70
29	Healthcare Practitioners & Technical	\$1,121.06	\$1,161.66	\$1,130.51
31	Healthcare Support	\$631.60	\$644.93	\$563.33
33	Protective Service	\$636.74	\$621.24	\$882.19
35	Food Preparation & Serving Related	\$567.57	\$541.33	\$422.02
37	Building and Grounds Cleaning & Maintenance	\$508.25	\$519.11	\$484.14
39	Personal Care & Service	\$504.88	\$448.50	\$417.77
41	Sales & Related	\$873.40	\$824.49	\$601.68
43	Office & Administrative Support	\$758.16	\$814.37	\$620.47
47	Construction & Extraction	\$850.41	\$849.20	\$827.19
49	Installation, Maintenance, & Repair	\$561.96	\$629.94	\$598.09
51	Production	\$752.05	\$753.13	\$777.85
53	Transportation & Material Moving	\$738.59	\$731.73	\$628.84
	Information Not Available	\$668.43	\$623.42	\$418.48
	All Occupations	\$801.64	\$798.29	\$709.06

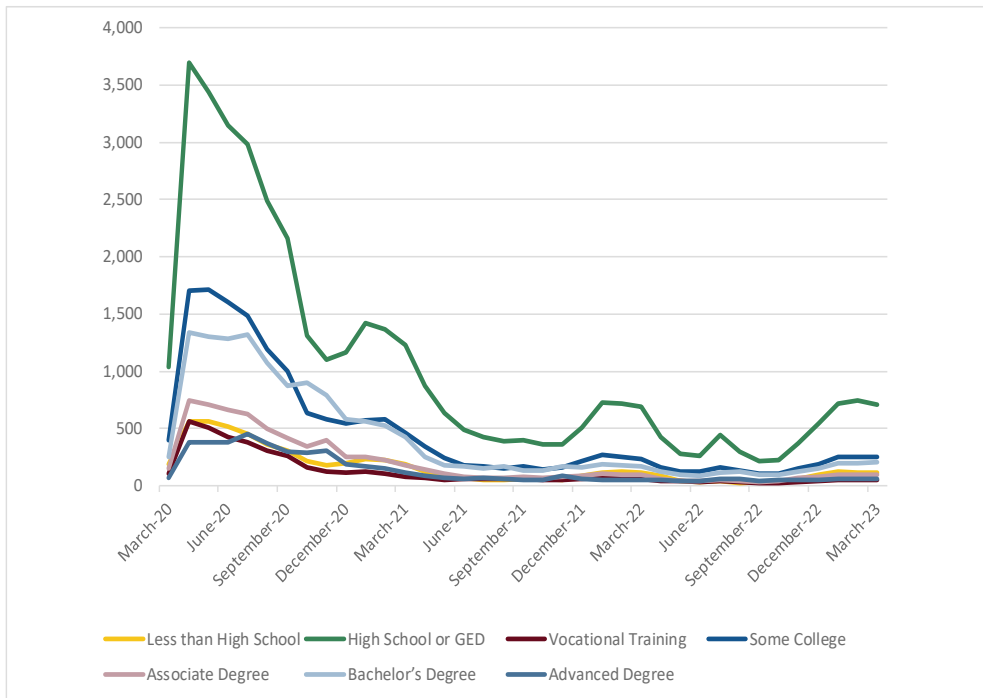
Age Breakdown



Claimants by Educational Attainment



Trends over time



Important Contact Information

For regional information, please contact your local Workforce Board: For further information, please go to <https://lmi.dua.eol.mass.gov/LMI/>

Berkshire County Regional Employment Board, Inc.
66 Allen Street
Pittsfield, MA 01201

<http://www.berkshirereb.org/>

(413) 442-7177



This workforce product was funded by a grant awarded by the U.S. Department of Labor's Employment and Training Administration. [\(more...\)](#)

